

Types of Sleeves



Bishop Sleeve



Cap Sleeve



Bell Sleeve



Kimono Sleeve



Raglan Sleeve



Cold Shoulder Sleeve



Dolman Sleeve



Batwing Sleeve



Raglan Sleeve



Leg of Mutton



Juliette Sleeve



Cuffed Sleeve



Petal Sleeve



Puffed Sleeve



Split Sleeve

Types of Collars



Chelsea



Pointed Flat



Rounded Flat



Shawl



Convertible



Mandarin



Ruffle



Jabot



Turtleneck



Cascade



Bow Tie



Bib



Shirt



Notched



Wing



Peter Pan



Johnny



Crew



Bertha



Cowl

Types of Skirts



A-LINE



BOX PLEATS



WRAP



MINI SKIRT



YOKE



HIGH WAIST



PANEL



PENCIL



STRAIGHT



PLEATED



TIERED



GATHERED



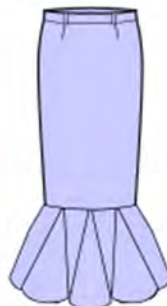
PEPLUM



GODET



HANKERCHIEF



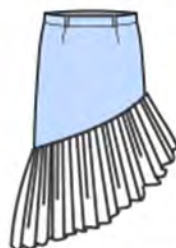
MERMAID



BUBBLE



SARONG



ASYMMETRICAL



HIGH-LOW



TIERED



COWL



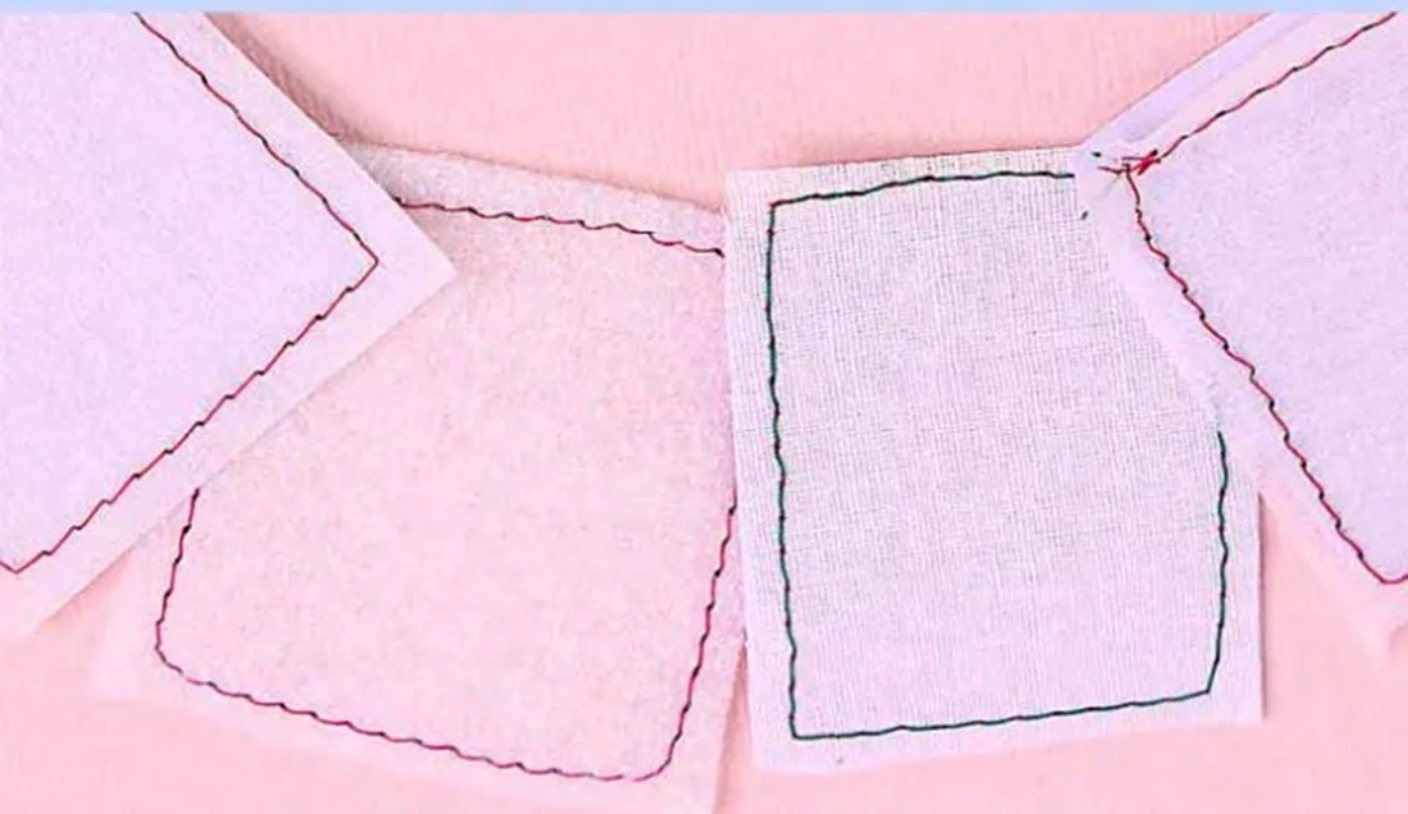
CIRCLE



TULIP



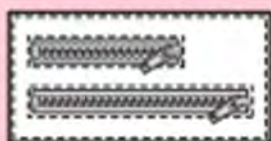
Types of
Interfacing



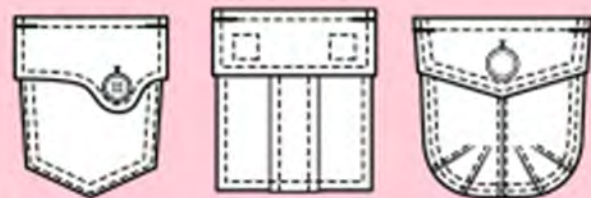
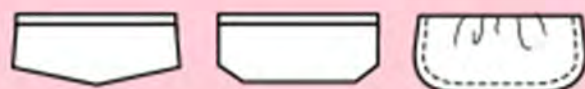
Cargo Pockets



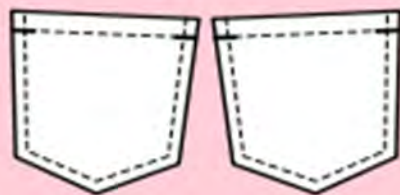
Zippered Pockets



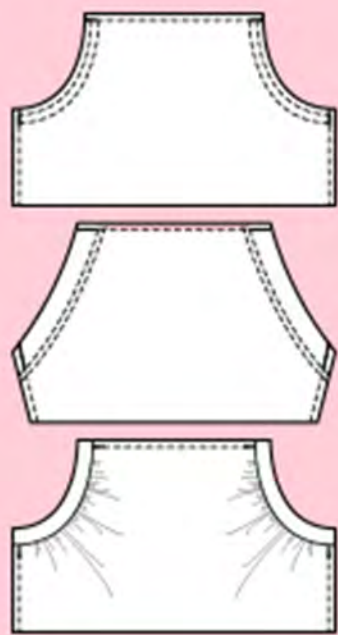
Flap Pockets



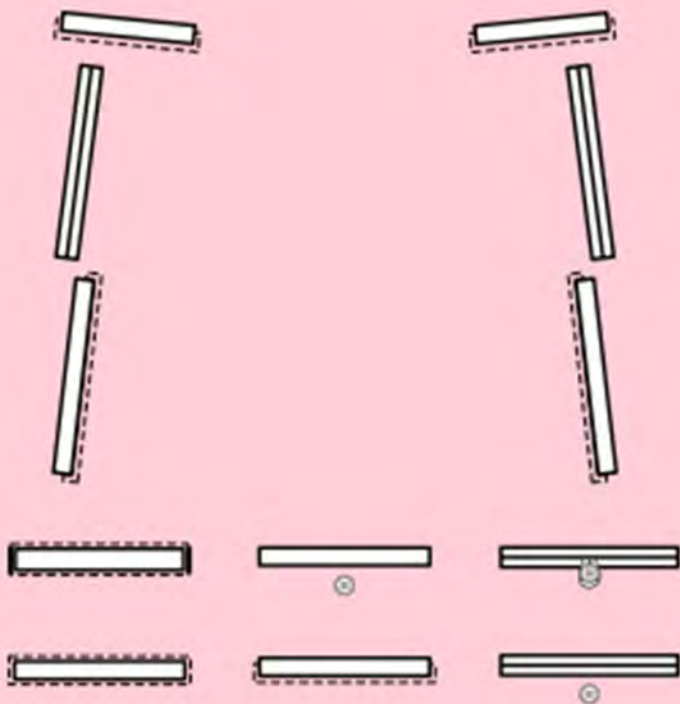
Patch Pockets



Kangaroo Pockets



Set-in Pockets



Slash Pockets



Side Pockets



Jeans Pockets

